

Budget Outlook for California School Districts



Legislative Analyst's Office

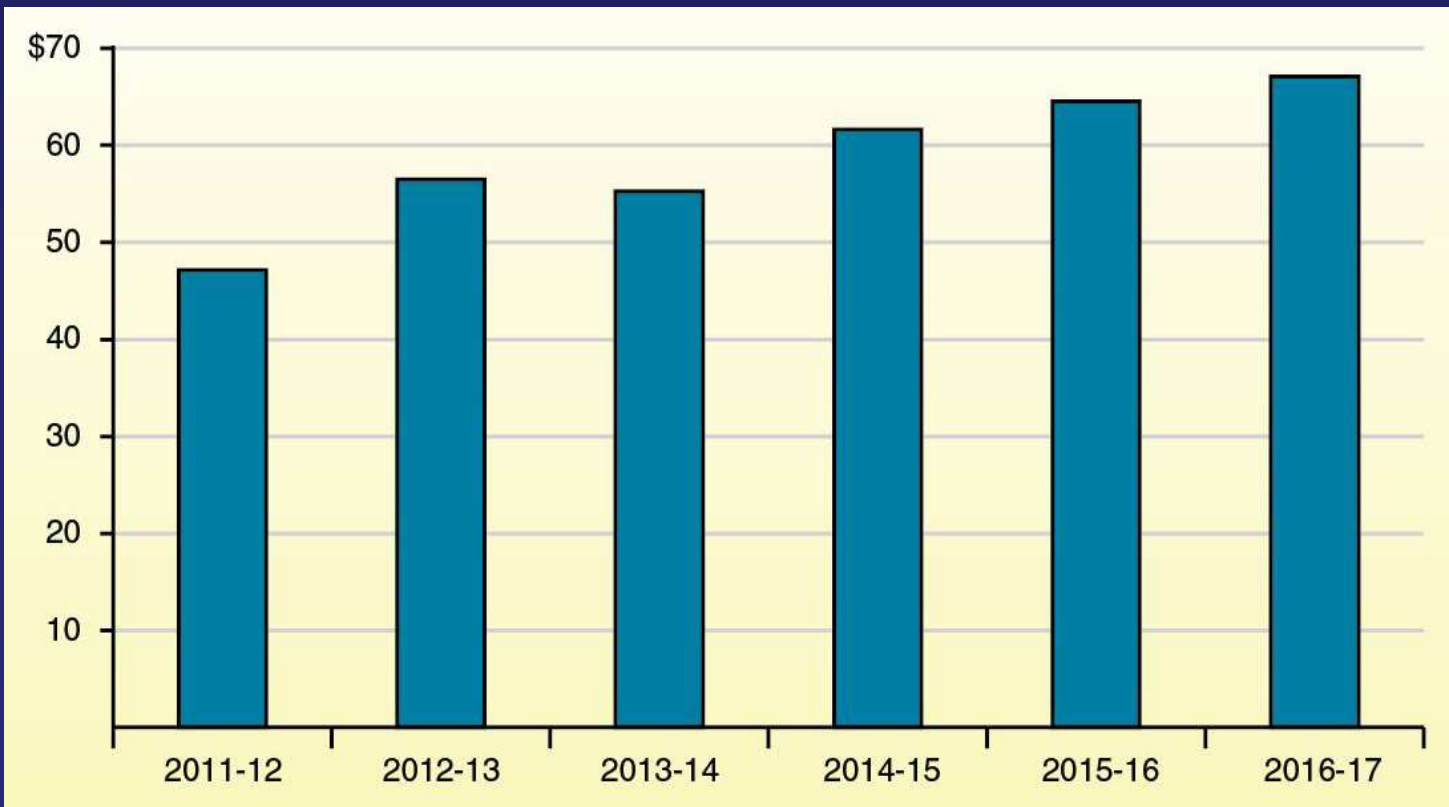
Presented to: California Society of Municipal Analysts

August 15, 2013

Proposition 98 Funding

Forecast of Proposition 98 Minimum Guarantee

In Billions



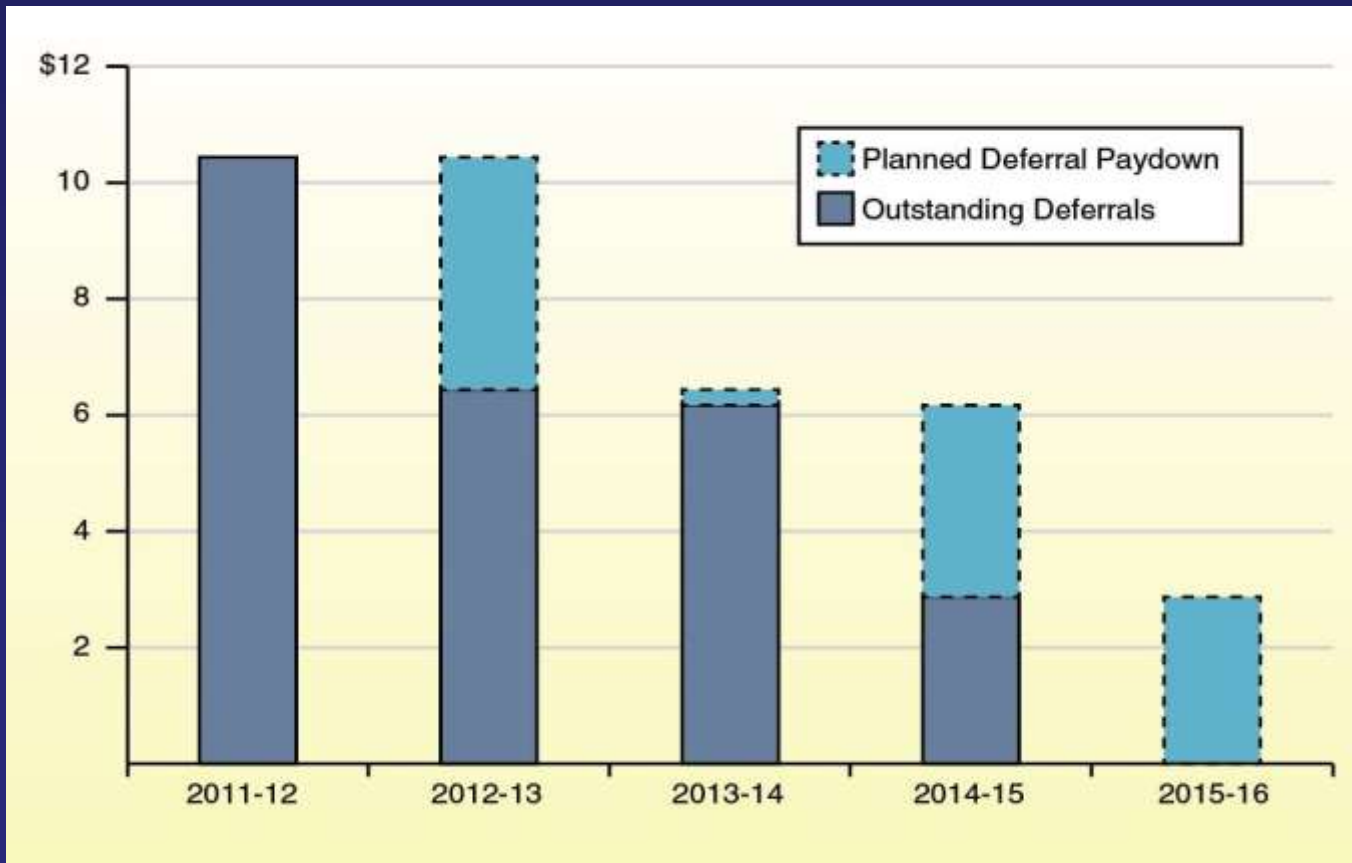
Forecast of Proposition 98 Maintenance Factor Obligation

In Billions



Governor's Plan to Eliminate Payment Deferrals

In Billions



Local Control Funding Formula (LCFF)

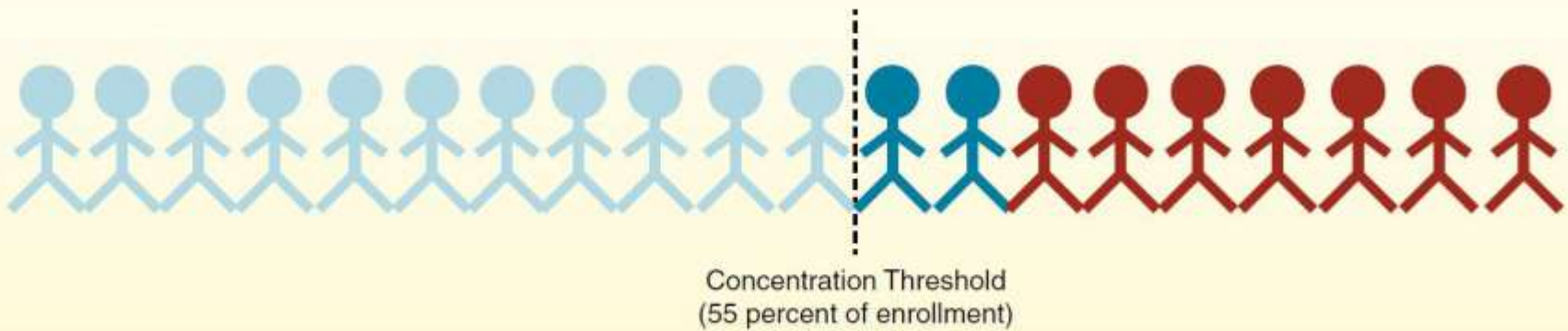
State Programs Eliminated Under New Funding System



Advanced Placement Fee Waiver	Instructional Materials Block Grant
Alternative Credentialing	International Baccalaureate Diploma Program
California High School Exit Exam Tutoring	National Board Certification Incentives
California School Age Families	Oral Health Assessments
Categorical Programs for New Schools	Physical Education Block Grant
Certificated Staff Mentoring	Principal Training
Charter School Block Grant	Professional Development Block Grant
Civic Education	Professional Development for Math and English
Community-Based English Tutoring	Revenue Limits
Community Day School (extra hours)	School and Library Improvement Block Grant
Deferred Maintenance	School Safety
Economic Impact Aid	School Safety Competitive Grant
Educational Technology	Staff Development
Gifted and Talented Education	Student Councils
Grade 7-12 Counseling	Summer School Programs
High School Class Size Reduction	Teacher Credentialing Block Grant
	Teacher Dismissal

Overview of LCFF

Formula Component	Rates/Rules
Target base rates (per ADA)	<ul style="list-style-type: none">• K-3: \$6,845• 4-6: \$6,947• 7-8: \$7,154• 9-12: \$8,289
Base rate adjustments	<ul style="list-style-type: none">• K-3: 10.4 percent of base rate.• 9-12: 2.6 percent of base rate.
Supplemental funding for certain student subgroups (per EL/LI student and foster youth)	20 percent of adjusted base rate.
Concentration funding	Each EL/LI student above 55 percent of enrollment generates an additional 50 percent of adjusted base rate.
Add-ons	Targeted Instructional Improvement Block Grant, Home-to-School Transportation, Economic Recovery Target.

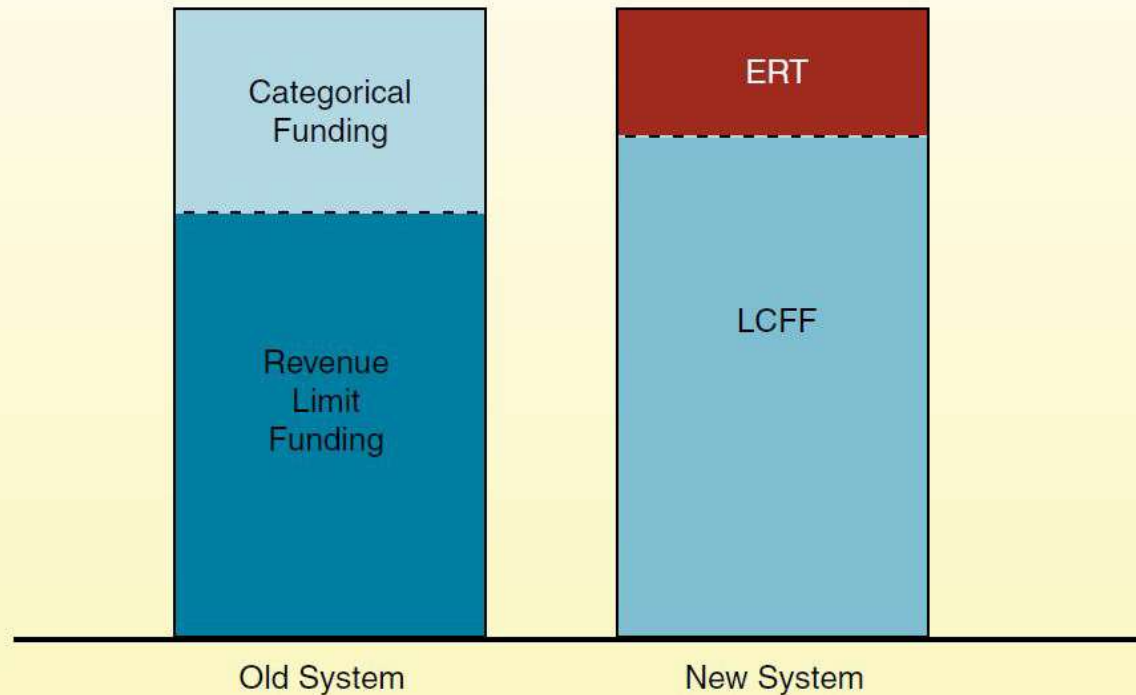
Illustration of How LCFF Works



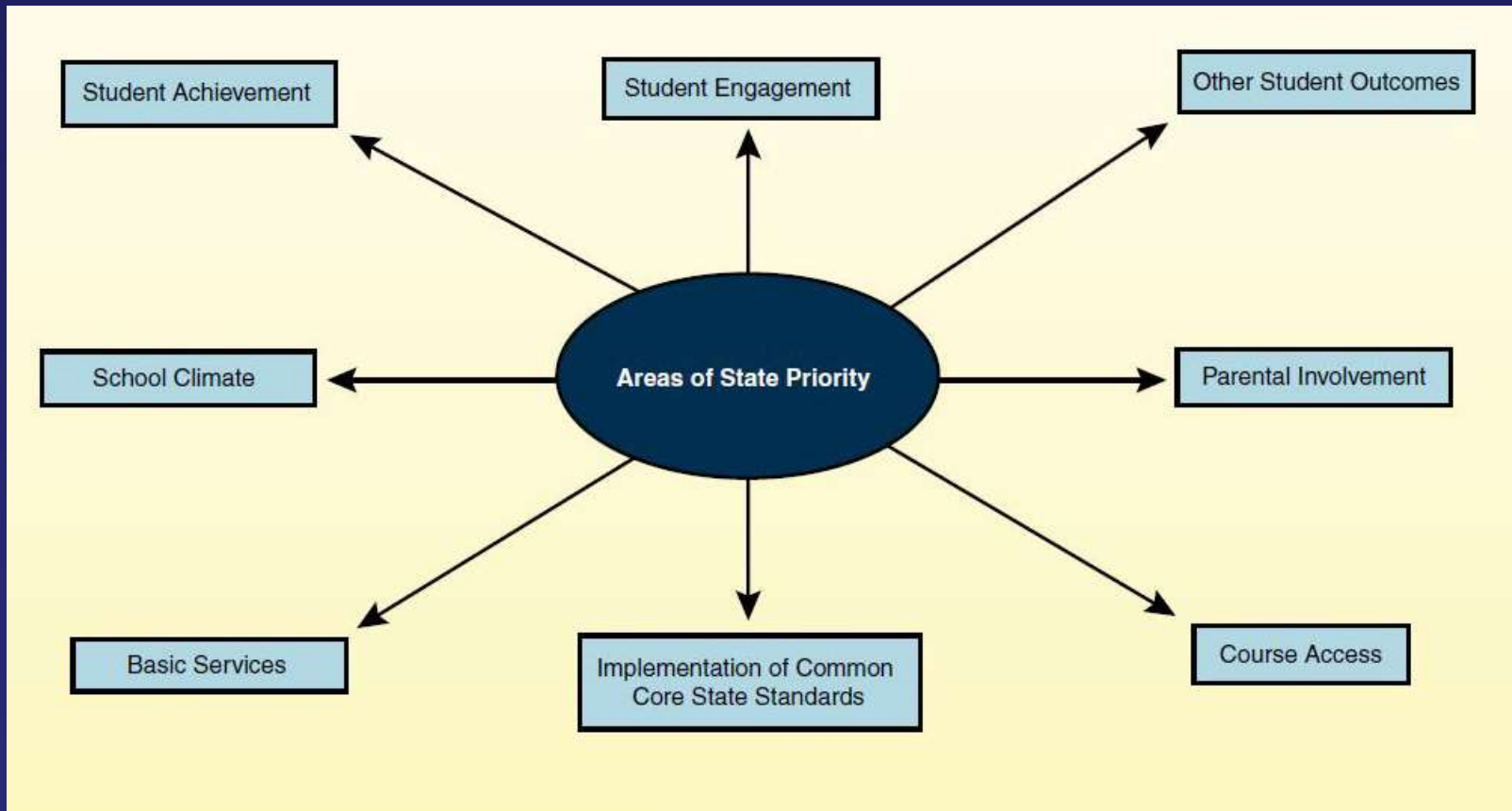
Funding Each Student Generates:						
Student	Base K-3 Rate	K-3 Adjustment	EL/LI Supplement	EL/LI Concentration	Total	
 EL/LI	\$6,845	\$712	\$1,511	—	\$9,068	
 EL/LI	\$6,845	\$712	\$1,511	\$3,779	\$12,847	
 Non-EL/LI	\$6,845	\$712	—	—	\$7,557	

Economic Recovery Target (ERT)

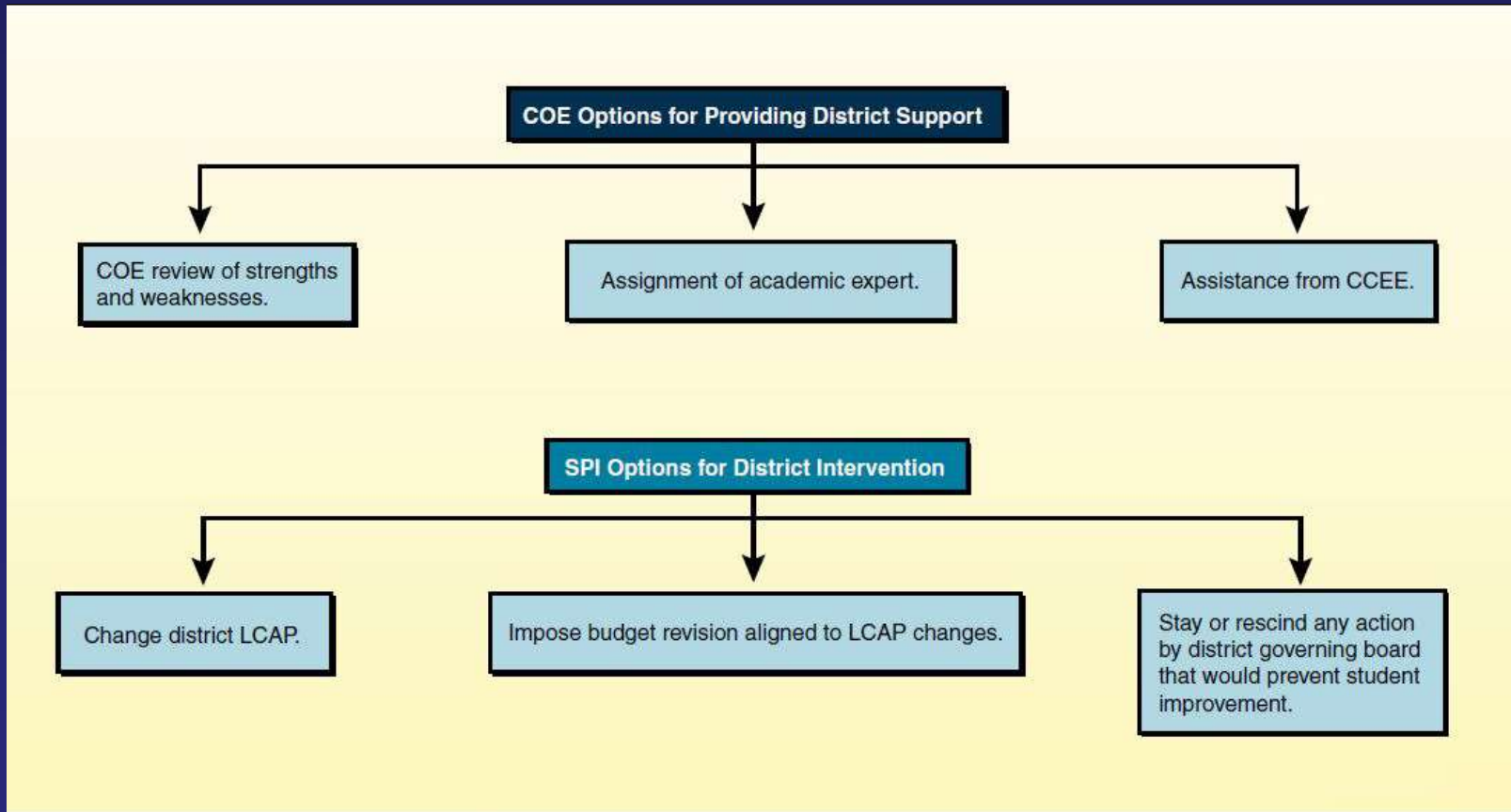
Total District Funding Allotment



Local Control and Accountability Plans (LCAPs)



New System of School District Support and Intervention



Implementation Timeline

