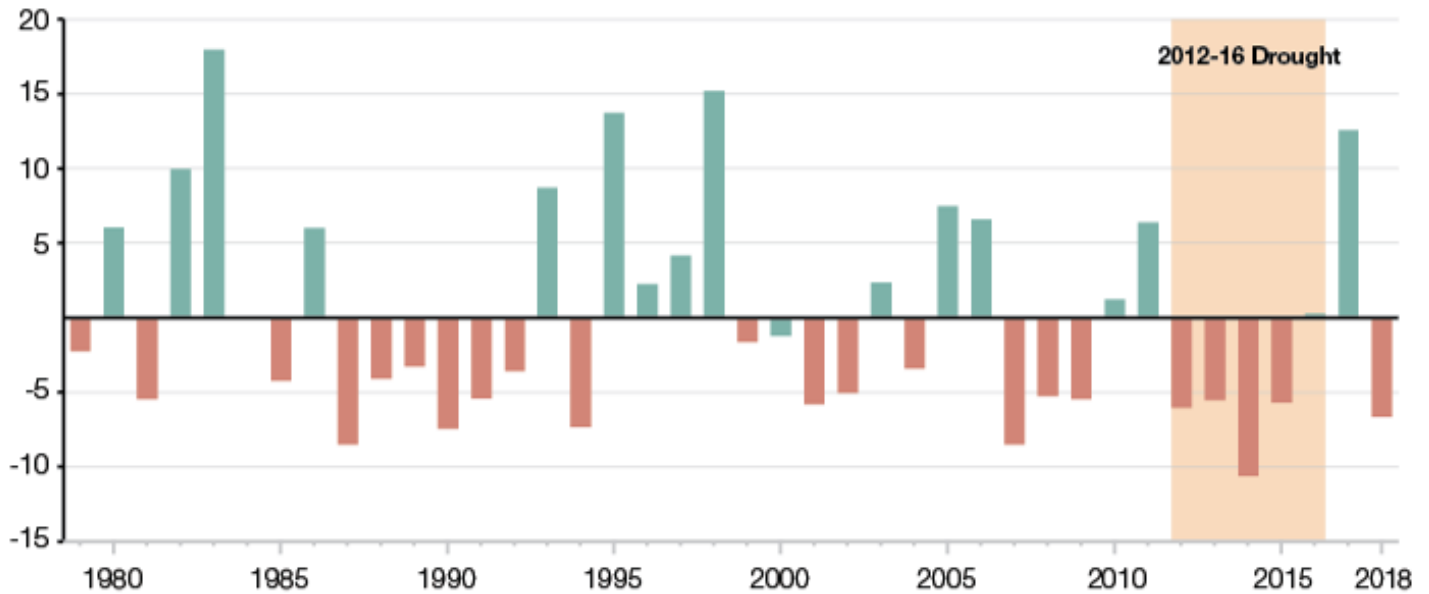


In Recent Years, Lower-Than-Average Precipitation Has Coincided With Higher-Than-Average Temperatures

Statewide Precipitation in Inches

Departure From Average of 22.45 Inches Using 1901-2000 Base Period



Statewide Temperature in Degrees

Departure From Average of 57.4 Degrees Fahrenheit Using 1901-2000 Base Period

